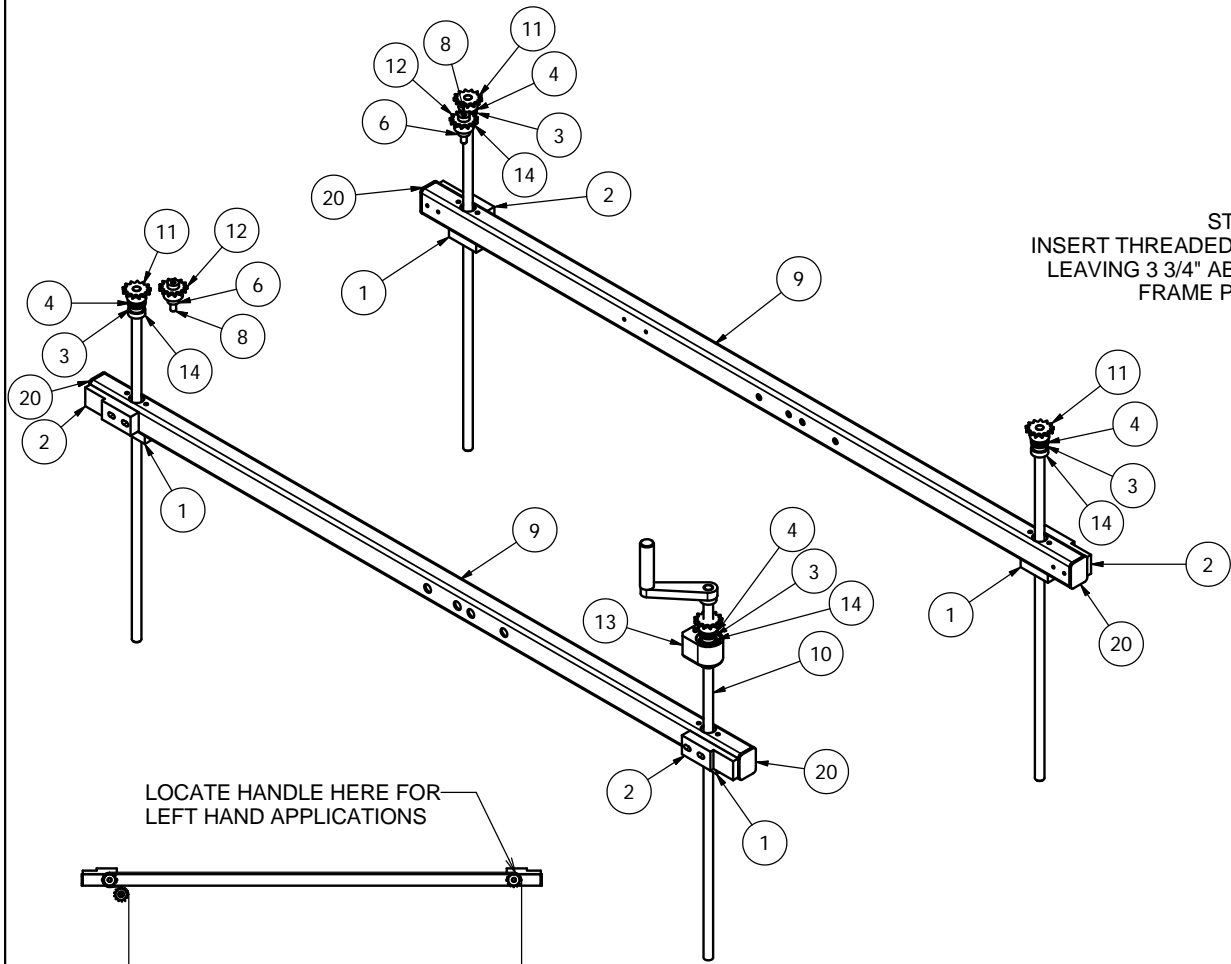
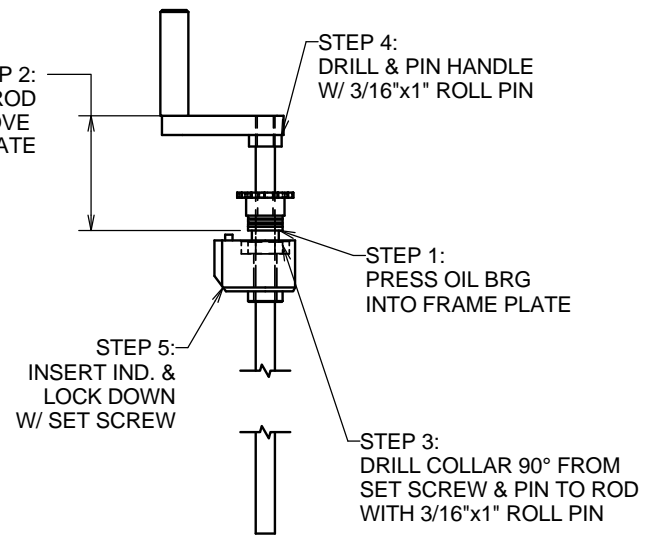


DWG NO		TB10500344.01
REV.	DATE	DESCRIPTION
▲	5/20/08	ADDED COLLARS (14), REPLACED SPACER (2) AND SHOULDER BOLT (8)
▲	12/09/09	MOVED IDLER SPROCKET TO ENTRY END TO AVOID TAPE ROLL - JJS

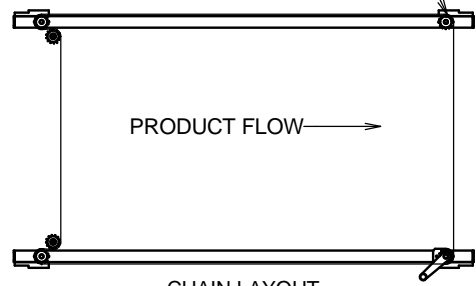


STEP 2:
INSERT THREADED ROD
LEAVING 3 3/4" ABOVE
FRAME PLATE



SUB ASS'Y PROCEDURE
1/4:1

LOCATE HANDLE HERE FOR
LEFT HAND APPLICATIONS



RIGHT HAND ASSEMBLY SHOWN

MATERIAL SEE B/M	FINISH -	DESCRIPTION UPPER 4-POINT ADJ. 2007			SCALE 1/8:1	Combi PACKAGING SYSTEMS LLC
		DRAWN BY sbeatty	DRAFT DATE 5/21/2007	CHECKED BY		
TOLERANCES (UNLESS OTHERWISE SPECIFIED) .000 = ± .003 .00 = ± .010 ANGLES = ± 1/2 FRACTION = ± 1/64		NOTE: THIS DRAWING IS NOT TO BE REPRODUCED OR COPIED WITHOUT CONSENT FROM COMBI PACKAGING SYSTEMS		SIZE B	DWG NO TB10500344.01	