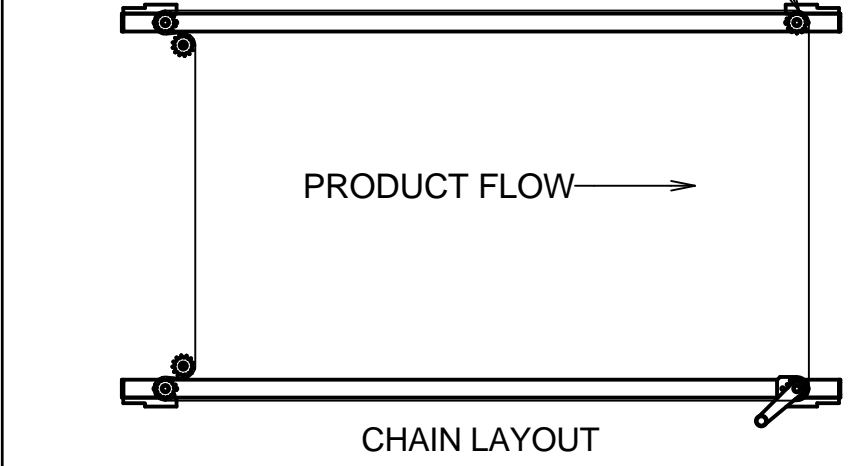
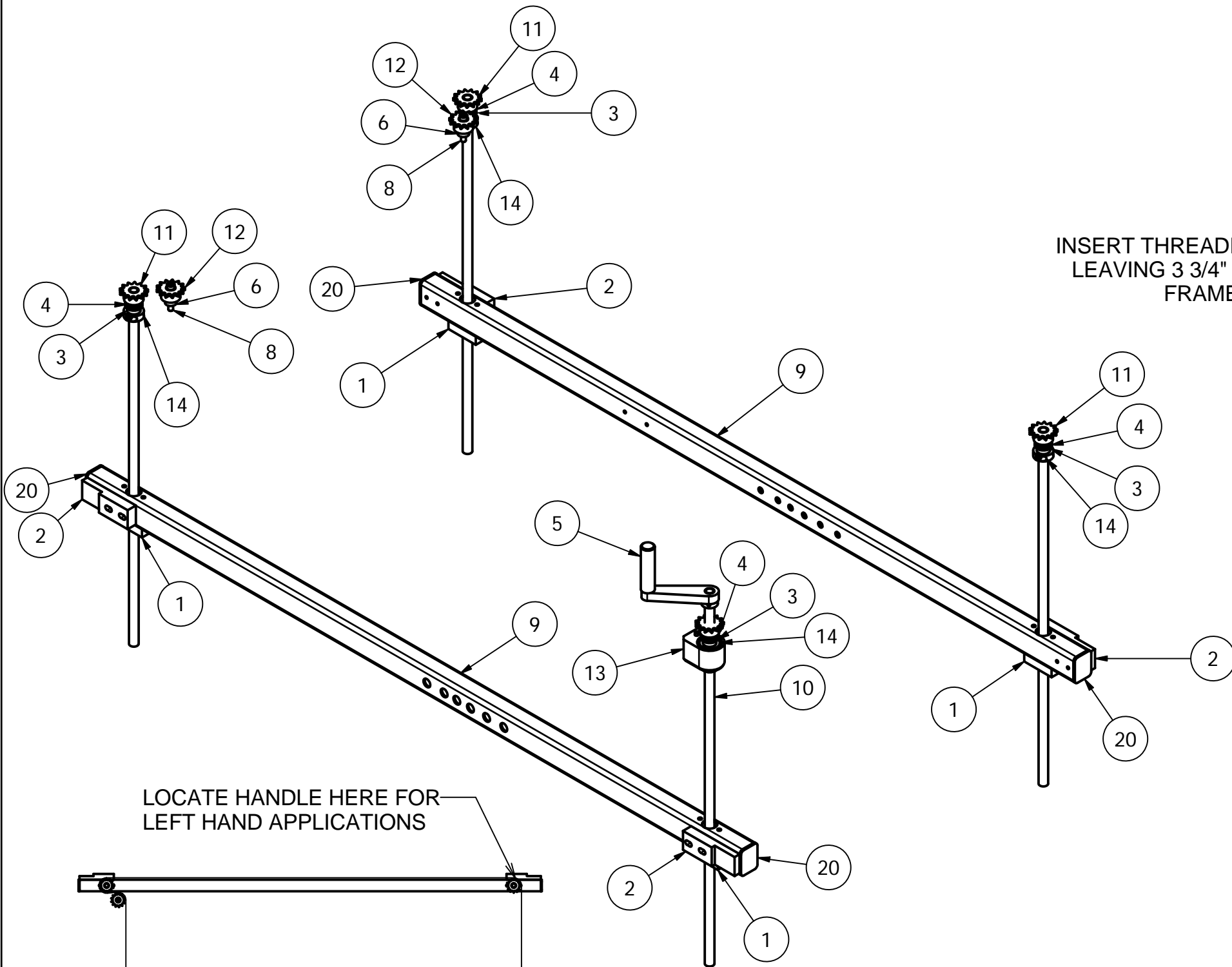
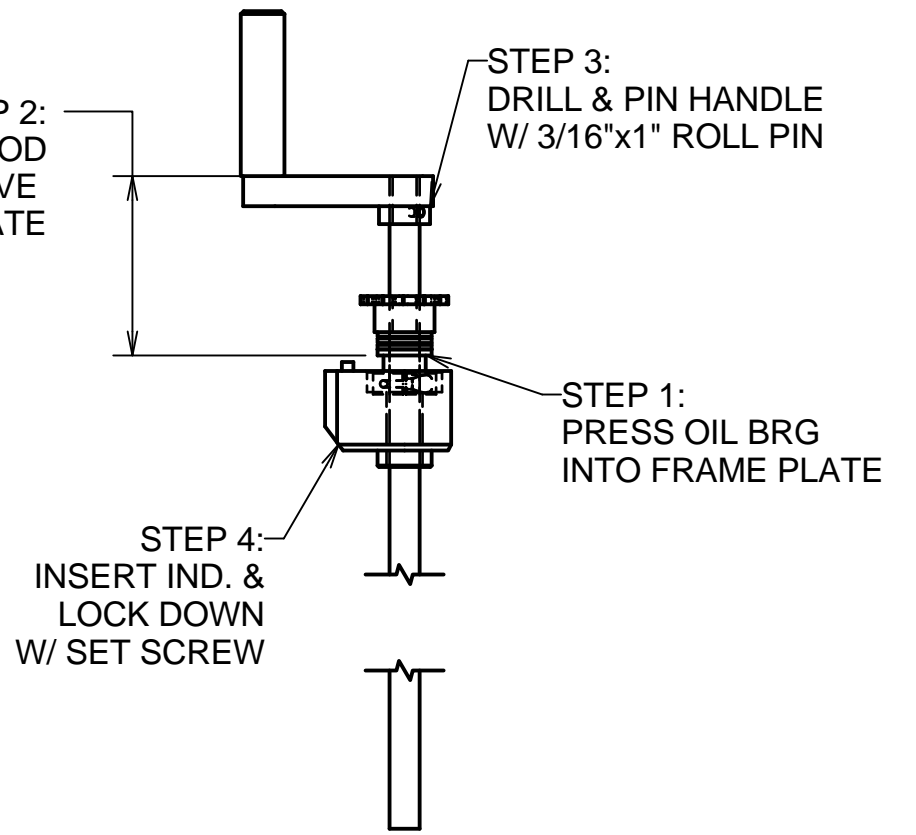


DWG NO		TB10500344.01
REV.	DATE	DESCRIPTION
△	5/20/08	ADDED COLLARS (14), REPLACED SPACER (2) AND SHOULDER BOLT (8)
△	12/09/09	MOVED IDLER SPROCKET TO ENTRY END TO AVOID TAPE ROLL - JJS
△	060314	REMOVED STEM 3:DRILL AND PIT SHAFT COLLAR.JK.



STEP 2:
INSERT THREADED ROD
LEAVING 3 3/4" ABOVE
FRAME PLATE



SUB ASS'Y PROCEDURE
1/4:1

RIGHT HAND ASSEMBLY SHOWN

MATERIAL SEE B/M TOLERANCES (UNLESS OTHERWISE SPECIFIED) .000 = b .003 .00 = b .010 ANGLES = b 1/2 FRACTION = b 1/64	FINISH -	DESCRIPTION UPPER 4-POINT ADJ. 2007			
		DRAWN BY sbeatty	DRAFT DATE 5/21/2007	SCALE 1/8:1	
		CHECKED BY	CHECK DATE	SIZE B	DWG NO TB10500344.01