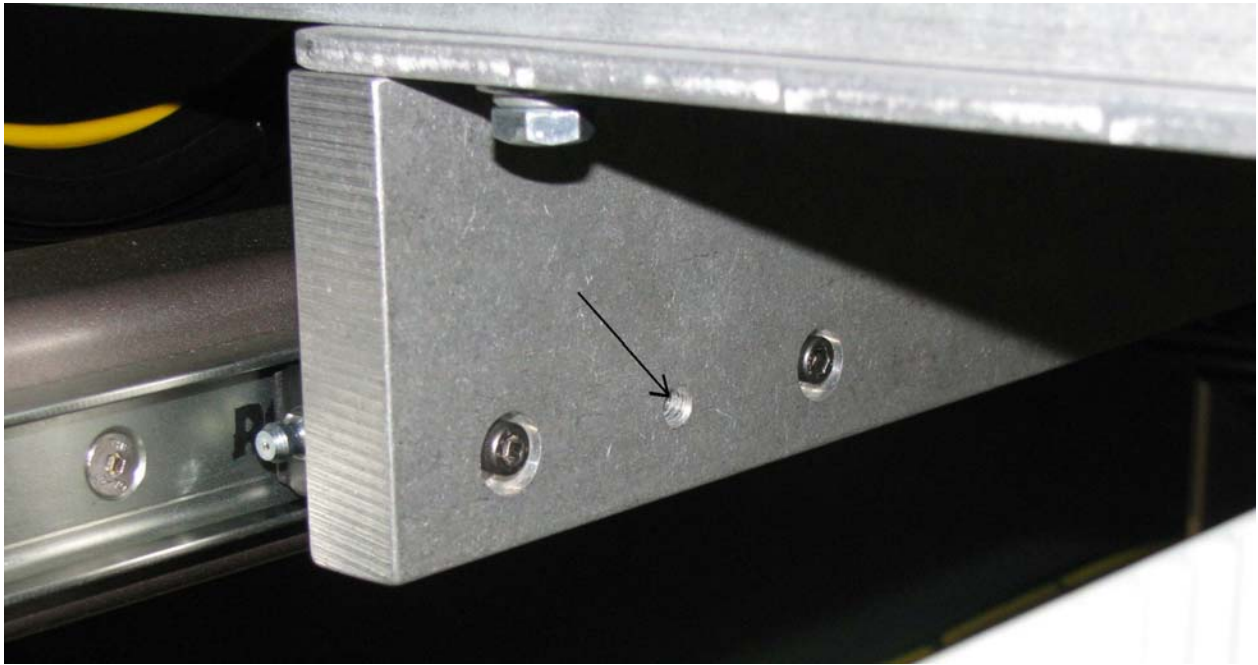


## Cassette Adjustment Procedure

1. Using the clearance hole provided, use a metric allen wrench to loosen the screw on the cassette. See picture below.



2. Using the wrench in the picture below, adjust the eccentric roller (clockwise) until the clearance is eliminated. Once adjusted, hold the wrench in place and using the allen wrench used above, re-tighten the screw on the cassette.

3. Complete for all cassettes as needed.

