

MACHINE SPECIFICATIONS:
 VOLTAGE: 120V/1PH/60HZ - 30 AMP DISCONNECT
 NEMA RATING: 12

AIR: 80PSI, 3/4" SUPPLY LINE
 CONSTRUCTION: MILD STEEL W/ STEEL-JIT PAINT
 CASE: RSC KD, 175-275 LB TEST

PROJECT DETAILS (QUOTE #42126-R1):
 -ZEZSB CASE ERECTOR/BOTTOM TAPER
 *MODIFICATION TO RUN CASES LISTED BELOW
 *DRY CONTACT INPUT FOR CASE CALL
 -SKIDDING, CRATING AND PREPARATION FOR SHIPMENT

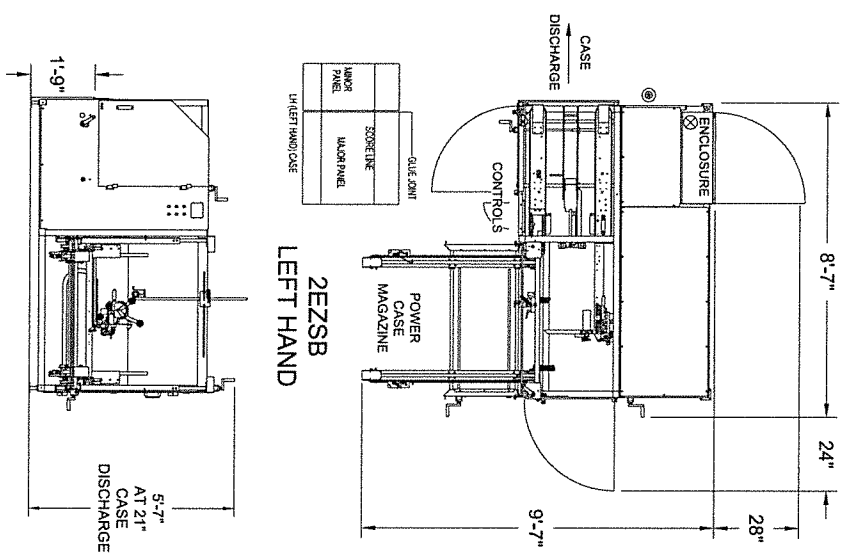
CASE INFORMATION:

PRODUCT DESCRIPTION	HAND OF CASE (Right or Left)	CASE TYPE (IE: RSC /HSC / FOL /FOL)	CASE SIZE (Inside Dimensions)			
			L"	W"	H"	CPM
Duplcr 2	Left Hand	RSC 44 ECI	11-7/16	9-7/16	4-3/8	10

*CASE HAND MUST MATCH SELECTED MACHINE HAND

TO BE FILLED IN:
 CASE DISCHARGE ELEV: 22"
 (21" MIN - 25" MAX)
 MACHINE HAND: LEFT HAND
 (RIGHT HAND OR LEFT HAND)

REV	DATE	BY	DESCRIPTION
1	DJE		REMOVED CASTERS AND 18" FOOTBOLTS, ADDED ELV AND HAND INFO



APPROVAL SIGNATURE: *Mark Arnold*
 APPROVED BY: _____
 DATE: 8-22-16

Combi

COMBI PACKAGING SYSTEMS LLC
 5385 E Center Drive, Canton, OH 44721-5734 1-800-521-9072

PROJECT: Arnold's Factory Supply-HUGHES
 TITLE: 2EZSB

NOTE: THIS DRAWING IS NOT TO BE REPRODUCED OR COPIED WITHOUT CONSENT FROM COMBI PACKAGING SYSTEMS

TOLERANCE: UNLESS OTHERWISE SPECIFIED
 DIMENSIONS: ** .1" MIN
 ANGLES: ** .1" MIN
 ELEVATION: ** .1"

SCALE	DATE	DWG NO	REV
NONE	05/16/16	56958-2	1

DO NOT SCALE

CHECKED: _____ DATE: _____ SHEET 1 OF 2

MACHINE SPECIFICATIONS:

VOLTAGE: 120V/1PH/60HZ - 15 AMPS ⊗

NEMA RATING: 12

AIR: 80PSI, 3/4" SUPPLY LINE ⊕

CONSTRUCTION: MILD STEEL W/ STEEL-IT PAINT

CASE: RSC KD, 175-275 LB TEST

MAX SPEED: UP TO 20 CPM

CASE RANGE (L" X W" X H"):

MIN.: 5"L X 5"W X 5"H

MAX.: 24"L X 16"W X 24"H

PROJECT DETAILS (QUOTE #42126-R1):

-TBS100FC CASE SEALER (TOP ONLY)

*MODIFICATION TO RUN CASES LISTED BELOW
-SKIDDING, GRATING AND PREPARATION FOR SHIPMENT

CASE SIZES (L" X W" X H"):

PRODUCT DESCRIPTION	HAND OF CASE (Right/Left)	CASE TYPE (RSC / RSC AT ECT)	CASE SIZE (Inside Dimension)				CPM
Junior 2	Left Hand	RSC AT ECT	1'-11 7/16"	9'-7/16"	4'-0/8"	10	

TO BE FILLED IN:

-CASE DISCHARGE ELEV.: 22"

(MIN 21" - MAX 25")

CASE WIDTH ADJUSTMENT: ZERO
(CENTERLINE OR ZERO LINE)

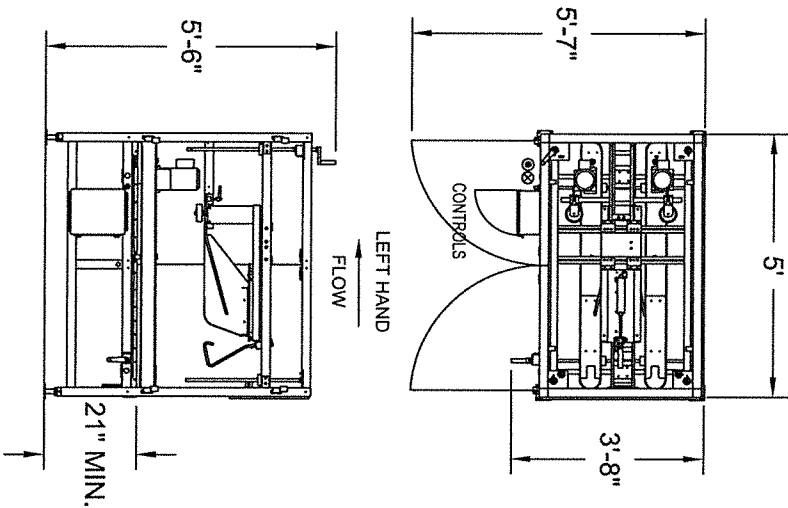
-MACHINE HAND: LEFT HAND
(LEFT HAND OR RIGHT HAND)


APPROVAL SIGNATURE:

APPROVED BY: *Mark Arnold*

-DATE: 8-22-16

REV	DATE	ZONE	DESCRIPTION
Δ	08/19/16	-	REMOVED GASTER ITEM, ADDED HAND AND ELEVATION INFO. DUE
XXX	XXX	XXX	





COMBI PACKAGING SYSTEMS LLC
5385 E Center Dr NE Canton, OH 44721-3724
1-800-521-5072

PROJECT: **Arnold's Factory Supply- HUGHES**

TITLE: **TBS100FC**

NOTE: THIS DRAWING IS NOT TO BE REPRODUCED OR COPIED WITHOUT CONSENT FROM COMBI PACKAGING SYSTEMS

TOLERANCE: UNLESS OTHERWISE SPECIFIED
DIMENSIONS: .0005" - .001" (FRACTIONS)
ELEVATION: .001" (FRACTIONS)

DO NOT SCALE	SIZE SCALE	DATE	DWG NO	REV
	B	05/16/16	56958-2	1
	DJE	CHECKED	DATE	

SHEET 2 OF 2