

**MACHINE SPECIFICATIONS:**

VOLTAGE: 200V/3PH/60HZ - 30 AMP/PS Ⓢ  
 NEMA RATING: 12  
 AIR: 30PSI, 3/4" SUPPLY LINE Ⓢ  
 CONSTRUCTION: MILD STEEL  
 CASE: RSC KD, 175-275 LB TEST  
 CASE SIZES:  
 MIN: 8 1/2" x 4 1/2" x 4 1/2"  
 MAX: 20 1/2" x 11 1/2" x 19 1/2"  
 QUOTED SPEED: UP TO 12 CPM

PRODUCT DESCRIPTION	CASE SIZE			GPM
IDU Unit for Hughes Network Systems	L"	W"	H"	
	12.25	10.625	6.375	5

REV	DATE	DESCRIPTION
A	03/30/11	Updated voltage, internal motor, added case config - 88
A	04/18/11	Updated to engineering drawing - 88

DATE	TIME
_____	_____
_____	_____

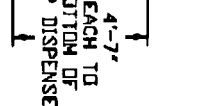
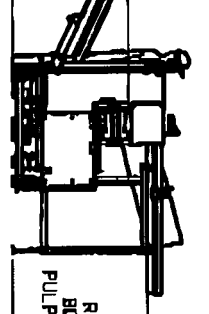
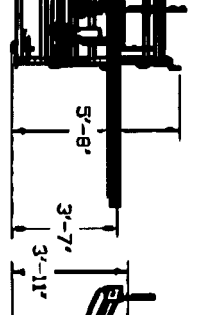
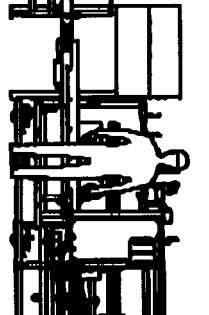
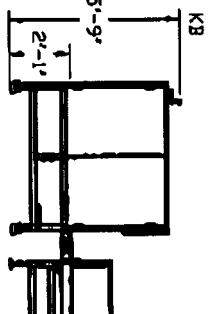
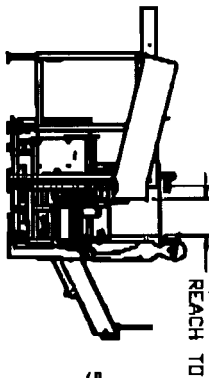
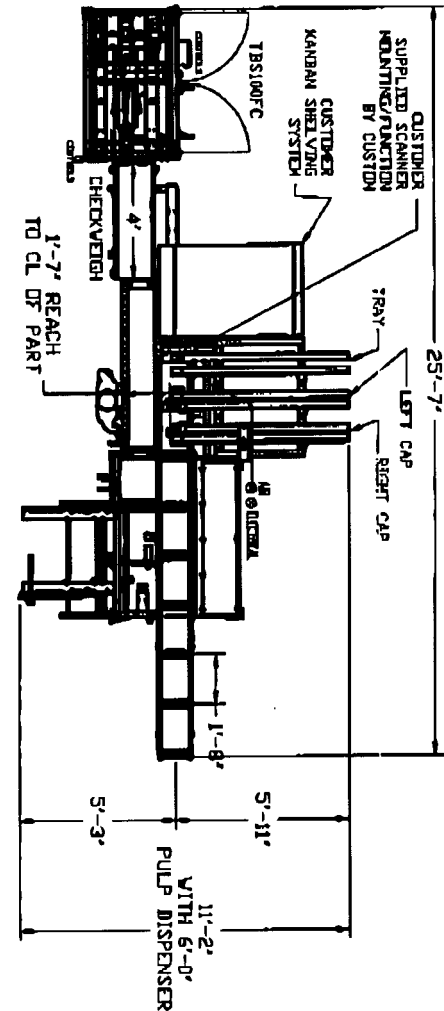
LEFT HAND CASE

PRODUCT DESCRIPTION	CASE SIZE			GPM
IDU Unit for Hughes Network Systems	L"	W"	H"	
	12.25	10.625	6.375	5

DATE	TIME
_____	_____
_____	_____

LEFT HAND CASE

- PROJECT DETAILS:**
- E2500 CASE ERECTOR
  - CLUSTER LUBE KIT
  - MODIFICATION TO CE COVERS FOR OPERATOR REACH
  - 12" WIDE X 16 1/2" TYPICAL, SERIES "S" CONVEYOR TECHNOLOGIES SPECIAL FLEX-LOC INDEXING CONVEYOR WITH (16) SUB-PLATES ON APPROX. 20 25" CENTERS FOR PART HOLDERS
  - 16" PART HOLDERS FOR 100 UNITS (HOLDERS TO OFFSET IDU TOWARD OPERATOR TO HELP REDUCE REACH)
  - CONVEYOR INDEXING CONTROLS TO INCLUDE (2) FINGER INDEXING SWITCHES AND (2) UNLOAD/LOAD TOGGLE BUTTONS
  - SEPARATE SAFETY CIRCUIT
  - PRODUCT END CAP MAGAZINES FOR MOLDED PULP END CAPS
  - 2 PERSON ERGOPACK STATIONS
  - SEPARATE SAFETY CIRCUIT
  - 40MM CHECKWEIGH SYSTEM
  - TBS100FC TOPMOUNT CASE SEALER (REVERSED 2-LINE)
  - NOTE - SEALER TO RUN 2" TAPE HEADS BUT SEALER SHOULD BE BUILT TO ACCOMMODATE 3" TAPE HEADS IN THE FUTURE)
  - AUXILIARY CONTROLS ON BACKINDEXED OR SEALER TAPE HEAD RETRACT KIT
  - MOBILITY PACKAGE FOR ERGOPACK AND CASTERS FOR SEALER
  - NOTE - NO CASTERS ON COMBI CHECKWEIGH SYSTEM)



- ELEVATIONS AND REACHES:**
- SEE DRAWING - ALL REACHES TO BE HELD - ANY CHANGES REQUIRE CUSTOMER APPROVAL

**APPROVAL SIGNATURE:**  
 APPROVED BY: *[Signature]*  
 DATE: 4/20/11

NOTE: STANDARD DRAWING. ADDITIONAL OPTIONS MAY REQUIRE CHANGE IN LAYOUT. CRITICAL DIMENSIONS.

NOTE: THIS DRAWING IS NOT TO BE REPRODUCED OR COPIED WITHOUT CONSENT FROM COMBI PACKAGING SYSTEMS.

SCALE	DATE	DATE	DATE
1/4" = 1'	SRB	03/15/11	

MACHINE DESCRIPTION: E2500 ERGOPACK SYSTEM  
 CUSTOMER: LAYDLE, HRS - SPACEWAY IND LINE  
 UNIT NUMBER: 55523-08 R2  
 COMBI PACKAGING SYSTEMS LLC